

Alaska Cruise

July 16 - 24, 2022

Don't Wait! Reserve your spot today!



Locations:

Seattle, WA Glacier Bay
Juneau, AK Ketchikan, AK
Skagway, AK Victoria, BC

Pricing:

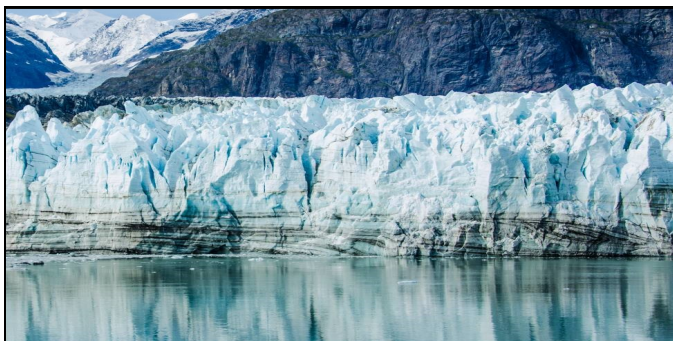
Per Person, Double Occupancy
Inside: \$4249
Balcony: \$4799
Mini-Suite: \$4999

Non-Heritage members please add an additional \$100

Optional Travel Insurance Available



Juneau, AK



Glacier Bay National Park & Preserve



Ketchikan, AK

Christmas Wonderland

~in Branson, MO~

Nov. 16th - 19th, 2021

Attractions:

Sight & Sound Theater's production of *Jesus*
Paula Deen's Family Kitchen
Beach Boys California Dreamin' musical production
Silver Dollar City
and much more!

Pricing:

\$815 per person, double occupancy
\$975 per person, single occupancy
Non-Heritage members please add an additional \$50
Optional Travel Insurance Available

Includes:

Deluxe Motorcoach Transportation
8 Meals (3 breakfast, 2 lunch, 3 dinner)
Porter Service, 1 bag per person at hotel
3 Nights Accommodations
Admissions to Attractions on Itinerary
Taxes & Gratuities for included services
Driver Tip

For more information & to RSVP contact Lisa

Life was meant for good friends and great adventures!



You can set up account alerts through our digital banking. You can be notified via text or email when your balance reaches a certain amount, for transactions, or even get a daily balance at a specified time. For help setting up account alerts, please contact Customer Service.

**KV\$B
 Spotlight**



Sandy Dillingham has been collecting carousels for about twenty to thirty years and has amassed around one hundred carousel items

On Display

**Sandy Dillingham's
 Carousel Collection**

in total. She started with a collection of Thomas Kinkade carousel horses because she liked the artist, but her love of carousel horses was nothing new. After she had the Kinkade collection, she just kept collecting.

Sandy finds carousels at gift shops. She also receives carousel-themed gifts from friends and family. She has a carousel quilt, towels, pin, and other items in addition to her individual carousel horses and regular carousels. She does not, however, have a favorite.

Do you have a collection you want to show off? Let us know! Contact Lisa about getting it displayed in our lobby!

? Riddle Me This ?

July/August Answer: Fingerprint
 (Footprint also accepted)

Winners: Janet Kufahl, Phyllis & Lyle Berges, Doug Wietham, Vesta Varga, Joyce Dendurent, LaVon Rosell, Michelle Long, Ann Barthuly, Lauranell Stewart

Winners look for a pre-punched card (2 punches) in the mail.



Can you figure out the riddle? Call your local branch with your answer. If you are correct, you will get two more punches on your punch card!

What disappears as soon as you say its name?

\$earch & Find

In our last newsletter, we hid a total of 118 footprints: page one had 18, pages two & three had 40, pages four & five had 19, pages six & seven had 33, and the back page had 8.

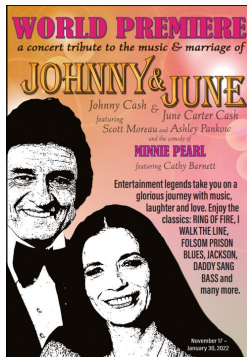
July/August Winners: Helen Poppe, Lyle & Phyllis Berges, Jim & Marilyn Shortt, Doug Wietham, Vesta Varga, LaVon Rosell, Sandy Dillingham, Alice Kimble, Phyllis Ladner, Lauranell Stewart, Marla Schlegel

Winners, look for a pre-punched (3 punches) card in the mail. We can consolidate multiple cards as requested.

Our money tree is losing its leaves! Count all of the dollar signs in this issue and call your local branch with your number. Please limit to one guess per person. If you're correct, you get five free punches on your card! We will be hiding a new image to find in every issue, so keep your eyes open!

**Kansas City
 New Theater
 & Restaurant**

The New Theater is back! We have 2 exciting shows for 2022!



Johnny & June
 January 26, 2022
 RSVP by Dec. 15

Save the Date!

The Play That Goes Wrong
 May 25, 2022

All-Inclusive
Cost: \$95 per person
 RSVP to Lisa

**UPCOMING
 Events**

**PHOTO
 GALLERY**

Photos from August's
 Back-to-School
 Drive-Thru Event

Like our Facebook page
 to see more pictures from
 our events and trips!



Moving Money with EPAY\$

Enjoy the ability to easily send or receive money person-to-person or account-to-account through our online banking epay\$ feature. No extra fees! Money can post to the receiving account as soon as the next business day. Contact KVSB for more information and help getting set up.

Clifton Fall Potluck

**October 14
 11:30 AM
 City Park**

Bring a side dish
 and a smile for a
 fun, fall gathering
 before the holidays!

RSVP by Oct. 8
 with Hailey



Christmas Bingo

December 16th

Heritage Room - 2 PM

Bring a wrapped or
 bagged gift of \$10
 value for a bit of
 winter bingo fun!
 Refreshments
 provided.



Due to a shortage in kitchen help, there will be no Thanksgiving luncheon this year. Please stop by the KVSB lobby during the month of November for 2 free punches.

Haunted Drive-Thru

October 28

Wamego Drive-Thru Lane 3

2 to 3 PM

Kids age 0 to 99 are welcome to stop by
 KVSB for a little Halloween treat!

No RSVP Necessary

Bonus punch if you come in costume!



**21st ANNUAL
 SNOWFALL CONTEST**

Predict how many inches of snow will fall from December 1st through April 15th at the Wamego branch and win a Heritage Club gift certificate! There is a prize for 1st, 2nd, and 3rd place. Official measurements are taken by Lanny Bosse, our official KVSB meteorologist.

Name(s):

Guess:

Please detach this coupon and return to Lisa
 before November 30th to participate.

Calendar of Events

SEPTEMBER	OCTOBER
<p>Sept. 6: Labor Day <i>All Branches Closed</i></p> <p>Sept. 21-27: Colorado Rails trip</p> <p>Sept. 23: Movie Day, "The Big Year" <i>KVSB Clifton - 1 PM</i></p>	<p>Oct. 11: Columbus Day <i>All Branches Closed</i></p> <p>Oct. 14: Clifton Fall Potluck <i>City Park - 11:30 AM</i></p> <p>Oct. 28: Haunted Drive-Thru <i>KVSB Wamego Lane 3 - 2 PM</i></p> <p>Oct. 31: Happy Halloween!</p>
NOVEMBER	DECEMBER
<p>Nov. 11: Veterans Day <i>All Branches Closed</i></p> <p>Nov. 16-19: Christmas Wonderland in Branson trip</p> <p>Nov. 25: Thanksgiving Day <i>All Branches Closed</i></p>	<p>Dec. 16: Christmas Bingo party <i>Heritage Room - 2 PM</i></p> <p>Dec. 24: Christmas Eve <i>All Branches Closed at Noon</i></p> <p>Dec. 25: Christmas Day <i>All Branches Closed</i></p> <p>Dec. 31: New Year's Eve <i>All Branches Closed at 3</i></p> <p>Jan. 1, 2022: New Year's Day <i>All Branches Closed</i></p>

Clifton 785-455-3345 **St. Marys** 785-437-6585 **Wamego** 785-456-2021



PRSR STD
U.S. Postage
PAID
Wamego, KS 66547
Permit No. 49



KAW VALLEY STATE BANK HERITAGE HIGHLIGHTS

Kaw Valley State Bank | 1015 Kaw Valley Park Circle | PO Box 245 | Wamego, KS 66547

September - October 2021 Issue **Adventure Awaits!**

